

"REDEMPTION THROUGH ACCOUNTABILITY"

# REFLEJO

BEXAR COUNTY COURT AT LAW  
SAN ANTONIO, TEXAS COURT 13

- LEVEL 1 TRAUMA INFORMED CARE CERTIFIED COURT
- 2024 TASC JUDGE RUBEN G. REYES OUTSTANDING SPECIALTY COURT TEAM AWARD
- 2022 TASC JUDGE JOHN C. CREUZOT AWARD FOR JUDICIAL VISION & LEADERSHIP



## REDEMPTION through ACCOUNTABILITY

### Who IS eligible?

- Case filed as a misdemeanor family violence assault
- Pre-adjudication Only (Pretrial Diversion Program)
- Substance Abuse Disorder Diagnosis
- Moderate & High Risk Offender
- Resides in Bexar County
- No active or pending felonies
- Complaining witness agrees to participation

### Who is NOT eligible?

- Case is NOT filed as a misdemeanor family violence assault
- Sentenced to probation
- Low Risk Offender
- Resides outside of Bexar County
- Active or pending felonies
- Complaining witness does not agree
- No gang affiliation

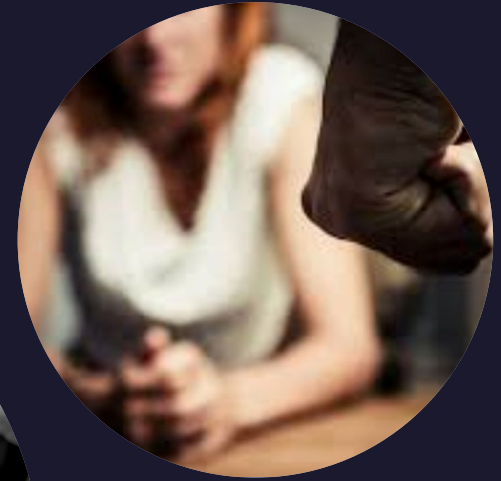
## Healing Trauma through COMPASSION

Hon. Rosie Speedlin Gonzalez,  
Judge: Bexar Co. Court at Law  
No. 13 & REFLEJO Court



# ANSWERS

- Family/Domestic Violence exists among us
- Who ~ What ~ When ~ Why ~ How
- The Cycle of Control, Power & Abuse
- Generational Trauma
- How do we stop it? Is there a solution? Is there a cure?





"REDEMPTION THROUGH ACCOUNTABILITY"  
**REFLEJO**  
BEXAR COUNTY COURT AT LAW  
SAN ANTONIO, TEXAS **COURT 13**



"REDEMPTION THROUGH ACCOUNTABILITY"  
**REFLEJO**  
BEXAR COUNTY COURT AT LAW  
SAN ANTONIO, TEXAS **COURT 13**



**COMPASSION**  
When we see someone drowning in a river and respond by pulling them out.

**JUSTICE**  
When we go upstream and help people keep from falling into the river in the first place.



# BEXAR COUNTY

is home to the highest number of family & domestic violence cases in the State of Texas. It is also home to the highest number of intimate partner violence homicides.

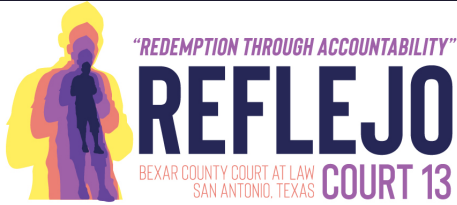
- How do we, as a community, start to take action to bring those numbers of cases and homicides down?

*"There comes a point where we need to stop just pulling people out of the river. We need to go upstream and find out why they're falling in."*

*~ Bishop Desmond Tutu*

# Bexar County DV FV Profile

- x At the end of 2018, 85%-90% of DEFENDANTS charged with a MISDEMEANOR domestic violence/family violence case, were arrested under the influence of alcohol, cocaine, meth or other substance OR the criminal complaint against them included information stating that the DEFENDANT has a **substance abuse issue**.
- x Out of this UNIVERSE of DEFENDANTS, almost 100% of them self-disclosed that they were adult SURVIVORS of **unresolved** childhood abuse, neglect and/or **TRAUMA**.
- x In 2019, San Antonio recorded 27 DV FV homicides, 12 of whom were women. Calls made for assistance by SAPD in cases involving DV FV reached: 45,986. These call resulted in 13,461 family violence reports being filed. The ZIP CODES that had the most FV DV activity were 78202, 78226 and 78235. ~CoSA Metropolitan Health District
- x In 2020, San Antonio recorded 36 DV FV homicides, 20 of whom were women. ~Cosa Metropolitan Health District
- ★ “Stalking may be an area where **communities might consider redirecting resources from law enforcement-related solutions toward more family and individual counseling, for both victim and offender.**” ~Dr. Ryan Williams, Associate Professor of Criminology & Criminal Justice—University of Illinois Springfield, “I AM A STALKER” Netflix Documentary
- ★ Early Intervention works in targeted ways to stop early signs of violence. ~White Ribbon Organization-Australia
- ★ 1<sup>st</sup> time arrestees of DV FV are embarrassed, ashamed, fearful . . . vulnerable. This population will engage in services that will “make everything go away”. **REFLEJO COURT** Services provided include but are not limited to TRAUMA therapy, substance abuse treatment, individual and group therapy, job acquisition, sober home living facilities, securing of long-term residence, parenting classes, family reunification/reconciliation services, financial planning classes.



- Assault Bodily Injury-Married
- Assault Bodily Injury-Family/Household
- Violations of Protective Orders/No Contact Orders
- Terroristic Threats
- Interference with Emergency/911 Calls
- Unlawful Restraint
- Deadly Conduct



## CLASS A MISDEMEANORS



## RANGE of PUNISHMENT:

Up to, but no more than, 1 (one) year of incarceration at Bexar Co. Jail  
Up to, but no more than a \$4,000.00 fine  
Loss of 2<sup>nd</sup> Amendment Constitutional right to keep and bear firearms, guns and ammunition



**ANY COMMUNITY SUPERVISION** (even Deferred Adjudication) —PLEA—GUILTY VERDICT  
**LOSS** of (1) parental rights (2) higher ed financial aid (3) right to professional license (4) 2<sup>nd</sup> Amendment rights (5) housing opportunities

# How unresolved CHILDHOOD TRAUMA affects health across a lifetime

Childhood trauma isn't something you just get over as you grow up. Pediatrician Nadine Burke Harris tells us that the repeated stress of abuse, neglect and parents struggling with mental health or substance abuse issues has real, tangible effects on the development of the brain. This unfolds across a lifetime, to the point where those who've experienced high levels of trauma are at triple the risk for heart disease and lung cancer. She makes impassioned pleas for pediatric medicine to confront the prevention and treatment of trauma, head-on.

**Exposure to TRAUMA dramatically & negatively impacts brain development, immune systems, hormonal systems, physiology and DNA. CHILDHOOD TRAUMA exposure that is left unresolved and untreated can result in a 20-year difference in life expectancy.**

ACES: Adverse Childhood Experiences Study *(Felitti and Anda)*

**The higher your ACES Score the worse your health outcomes.**

**diabetes—asthma—COPD—lupus—fibromyalgia—hepatitis—depression—suicide attempts—cancer—heart disease—anxiety—high-risk behaviors—substance abuse.**

**“Adverse childhood experiences are the single greatest unaddressed public health threat facing our nation today” ~Dr. Robert Block.**



Dr. Nadine Burke Harris, Former Surgeon General of the State of California  
“The science is clear: Early adversity dramatically affects health across a lifetime.”

# Answers—Solutions—Remedios



## Trauma-Informed Intensive Outpatient Drug Treatment Higher Accountability & Increased Supervision Multi-Disciplinary Treatment Team/Best Practices

- ✓ Pre-Trial Diversion Program, 5 Phase Program, 1-2 year completion
- ✓ Initial Assessments and Diagnosis
- ✓ Case Management (referrals, VIA bus passes, UA vouchers, incentives/sanctions)
- ✓ Probation Supervision (BCAPD): UAs, CSR, curfews
- ✓ Behavior Modification/Moral Reconciliation Curriculum/Pathways to Healing (AIT)
- ✓ FV DV Parenting Classes
- ✓ Financial Education Classes
- ✓ Trauma Therapy & Mental Health Services: Individual and Group Therapy (CHCS & LTR)
- ✓ Reconciliation Opportunities (when consensual, safe and appropriate)
- ✓ Sober Housing partners (Lifetime Recovery & Oxford Homes)

### *“Redemption through Accountability”*

Successful completion of the REFLEJO Court Program will earn the participant a DISMISSAL & EXPUNGMENT of their arrest/case information & record, at no cost to them, which results in a true 2<sup>nd</sup> chance for this participant. This is made possible with the agreement of the Bexar County District Attorney & his office.

# Compassionate Summary

“Early Intervention . . . produces . . . more high school graduations, less criminality, increased employment, and decreased family and community violence.” ~Dr. James Heckman

**“People can learn to control and change their behavior, but only if they feel safe enough to experiment with new solutions.”**

~Bessel Van der Kolk, M.D., “The Body Keeps the Score”

“REFLEJO COURT changed my life.”

~Megan Moran



**COMPASSION**  
When we see someone drowning in a river and respond by pulling them out.

**JUSTICE**  
When we go upstream and help people keep from falling into the river in the first place.

Compassion and justice are companions, not choices.  
William Shakespeare

Stand for  
Justice,  
Compassion,  
and Love.



Thank You y que tengan muy buenos dias.

**JUNTOS** somos **MEJORES**

Hon. Rosie Speedlin Gonzalez

[rspeedlin.gonzalez@bexar.org](mailto:rspeedlin.gonzalez@bexar.org)

[www.bexar.org/1834/County-Court-13](http://www.bexar.org/1834/County-Court-13)

# UBUNTU

(n) the belief that we are defined by our kindness and compassion toward others



# UBUNTU

*(n) the belief that we are defined by our compassion and kindness toward others.*