

Springboards to Transformation: Using County Mental Health Law Planning to Build Momentum in Your County

The 6th Annual Judicial Summit on Mental Health
October 18-20, 2023



Welcome

- **Kristi Taylor**, Executive Director, Texas Judicial Commission on Mental Health
- **Doug Smith**, Managing Partner, D-Degree Coaching & Training
- **Molly Davis**, Staff Attorney, Texas Judicial Commission on Mental Health

JCMH Summit Panel: Key Themes

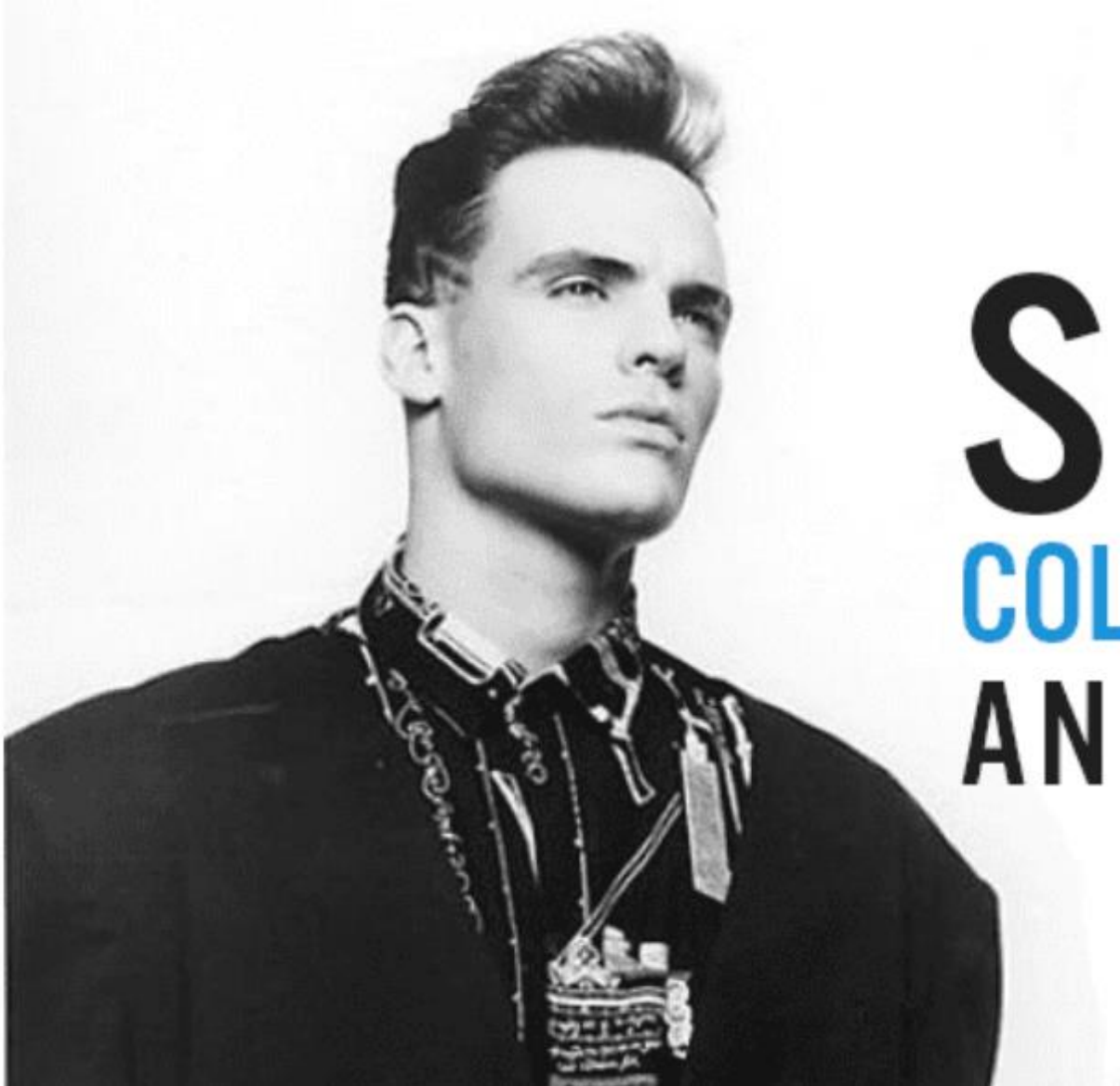
Establishing Meaningful Collaborations

Implementing an Action Plan

Your County Mental Health Law Plan

**MOVE
FAST AND
BREAK
THINGS**



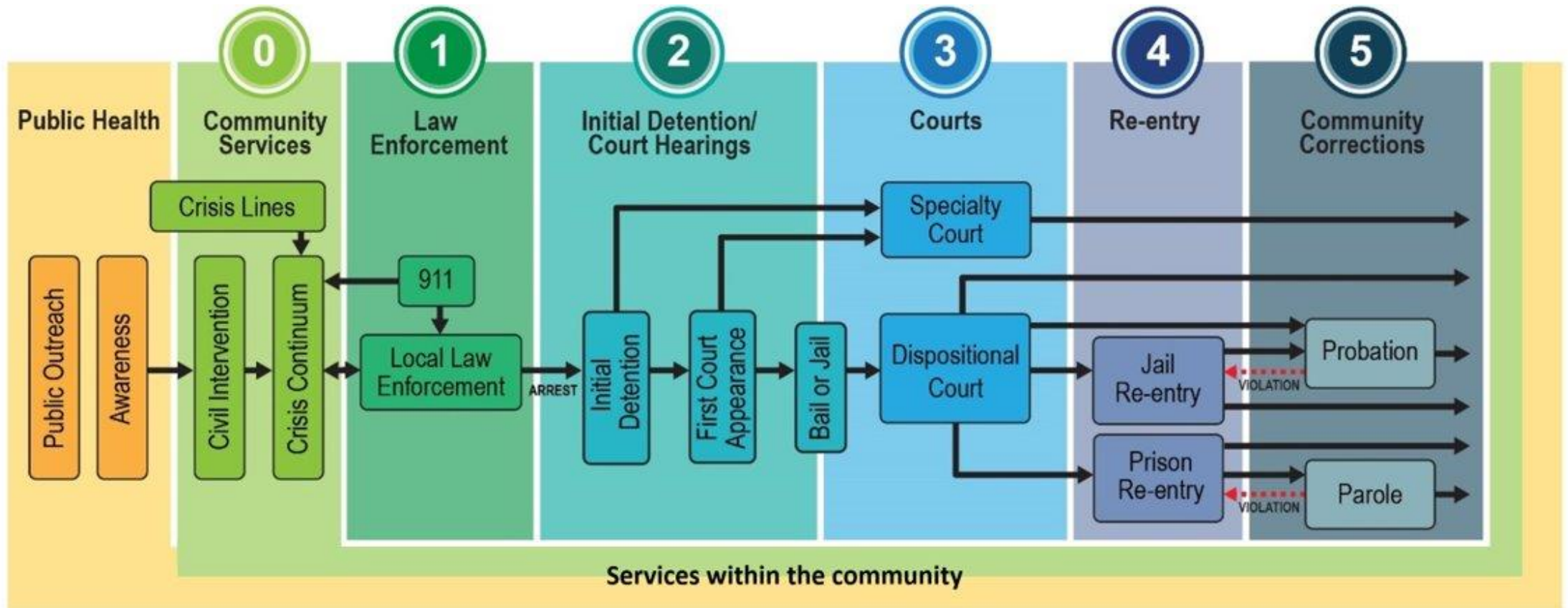


STOP
COLLABORATE
AND LISTEN

Establishing Meaningful Collaboration



What is a SIM Mapping?



Workshop Benefits

Helps facilitate
cross-system
communication
& collaboration

Helps identify
underused
resources

Helps with
early
identification of
people with
MH, IDD, or
SUD

Helps establish
a local set of
priorities for
change

SIM Facilitators



JCMH

Judicial Commission on Mental Health

<https://texasjcmh.gov/technical-assistance/sim-mapping-workshop/>

HHSC

**Texas Behavioral Health & Justice
Technical Assistance Center**

<https://txbhjustice.org/>

MMHPI

**Meadows Mental Health Policy
Institute**

<https://mmhpi.org/work/systems-transformation/>

PRA

Policy Research Associates

<https://www.prainc.com/sim/>

In my community...

- What are the collaborations that currently exist?
- Where are those collaborations strong and weak?
- What is something I can do to boost meaningful collaboration?

Implementing Action Planning

Identify Priority
Champions

Enlist People
with Lived
Experience

Get Meetings
and Locations
on Calendar

Chart Progress

Coordinate
with All teams

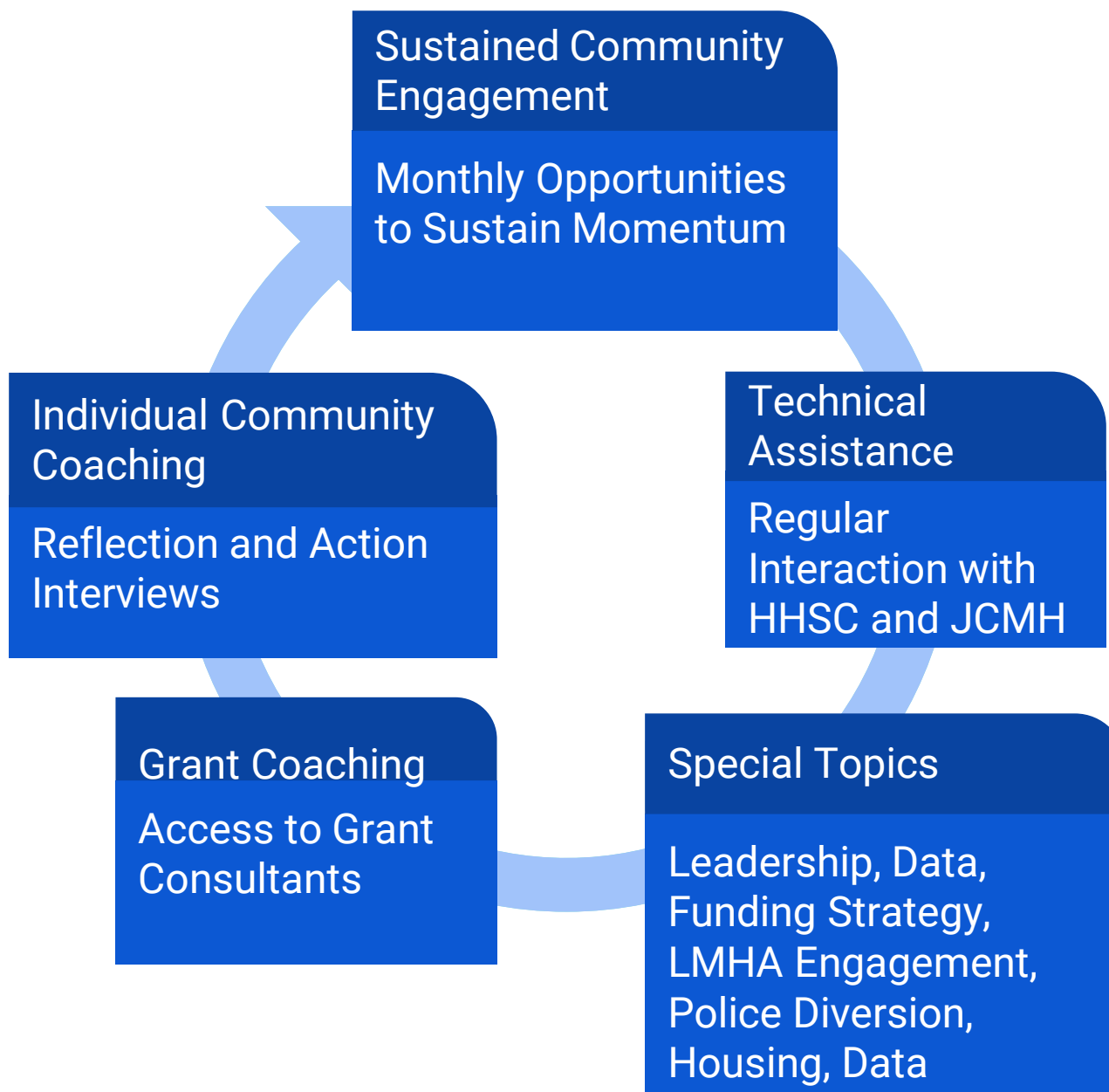


SIM Community of Practice

11 Communities that completed SIM Mapping

Monthly Meetings

Propelling Communities Forward



- Sponsored by **HHSC**
- Supported by **Texas Institute for Excellence in Mental Health**
- Technical Assistance from HHSC and JCMH
- Facilitated by Dr. Lynda Frost and Doug Smith

Success Factors

Communities That Make Progress...

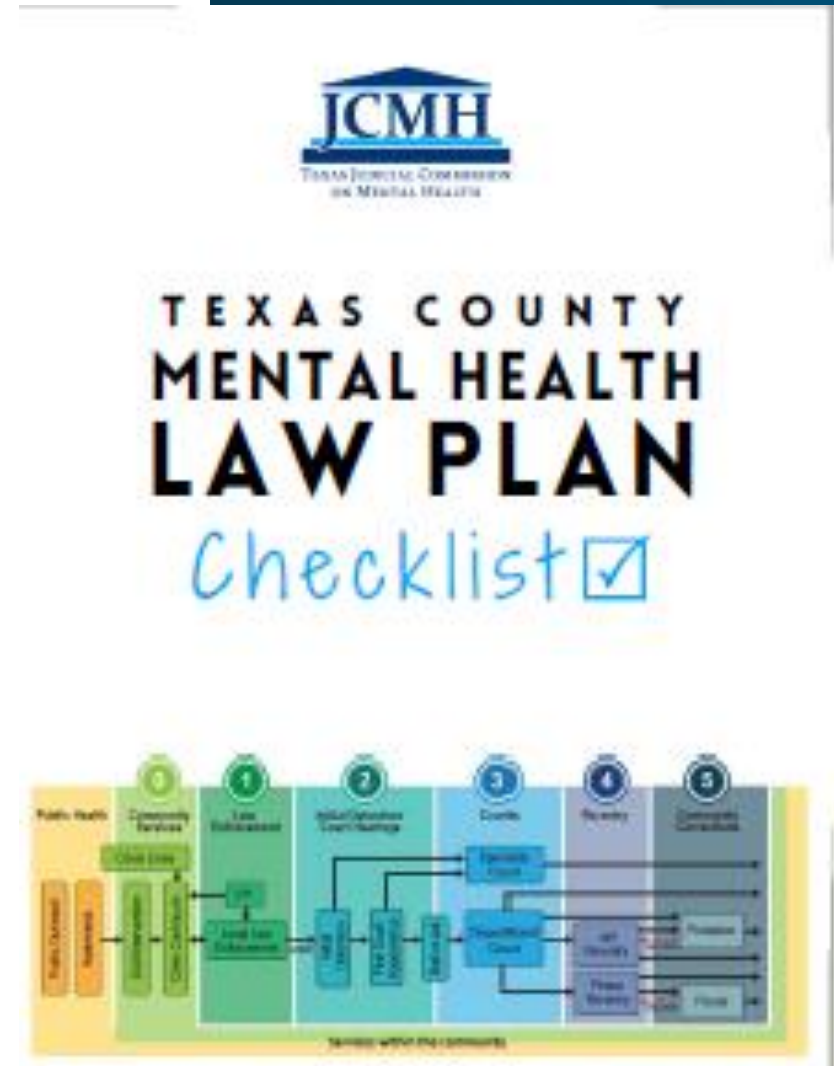
- ▶ Remain engaged with all stakeholder well past SIM (all intercepts)
- ▶ Have a Behavioral Health Leadership Team or formal coordinating body
- ▶ Use data and evidence to chart progress
- ▶ Notice less obvious signs of progress
- ▶ Build leadership capacity

How do we promote cross-sector engagement and build momentum in our community?

Use a County Mental Health Law Plan Checklist to Create a Comprehensive MH Law Plan

WHY IS THIS NEEDED?

The laws relating to persons with mental illness, or intellectual or developmental disabilities (IDD) are complex and span several different codes affecting multiple, diverse stakeholders.



I Have a Plan!



Pilot Program: How Will a County Benefit From Participation?



Identifies gaps and resources


Clarifies roles within counties

Streamlines Complex MH processes

Provides access to FREE resources

Identifies MH best practices

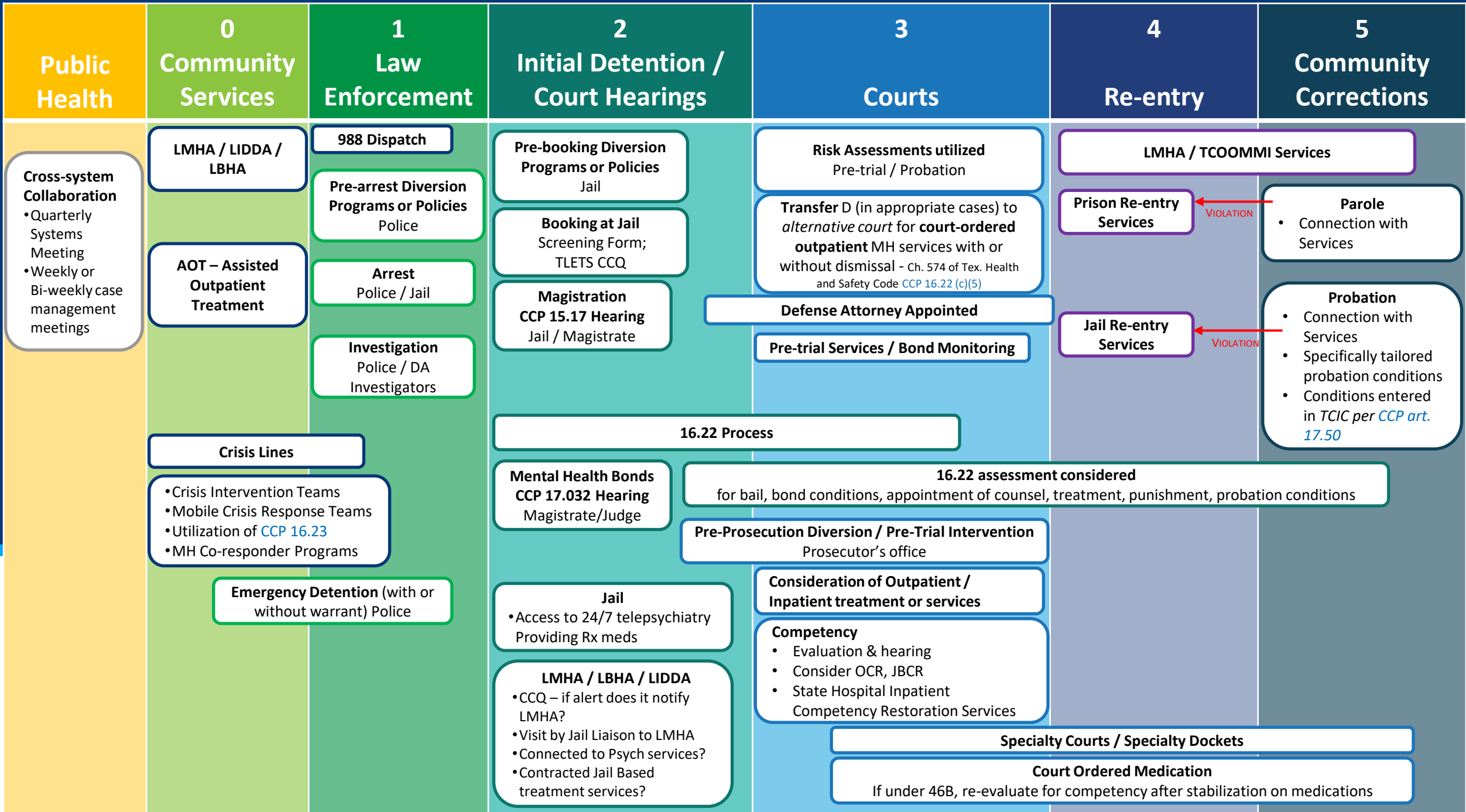
Creates accountability

- 
- 1) Apply for the Pilot Program until October 31st, 2023; or
 - 2) Use the Checklist as a Self-Assessment.

Texas MH Law Plan

The Administrative Judge will create a multidisciplinary team, if one does not already exist, that would review the JCMH Mental Health Law Checklist and then complete a template reflecting the county's plans related to the relevant mental health law issues according to the Sequential Intercept Model.

Cross-Systems Collaboration
Education and Awareness
Pre-Crisis Services
Crisis Services
Assisted Outpatient Treatment Court
Emergency Detention
Order of Protective Custody
Law Enforcement Must Divert When Appropriate
Warrantless Emergency Detention
Arrest
Jail Diversion
Magistration
Bond
Diversion
Mental Health Courts
Competency Restoration
Re-entry
Community Corrections



VIOLATION

VIOLATION

TEXAS MENTAL HEALTH LAW CHECKLIST

Intercept 2: Initial Detention/Court Hearings

Jail Diversion

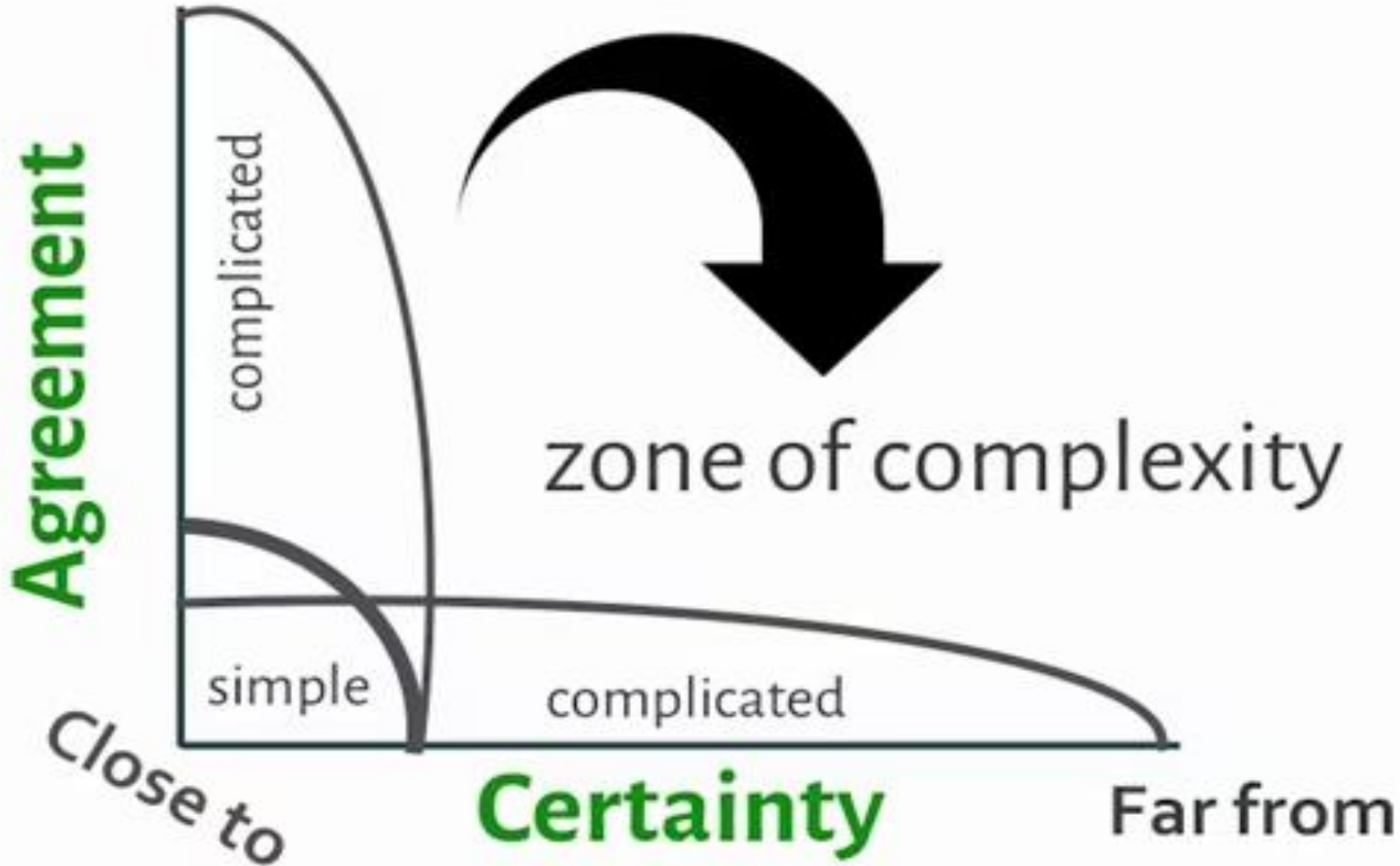
- Is our jail using the TLETS CCQ to identify defendants who have received prior state mental health services to the jail may continue the mental health care? [H&S Code § 613.013](#).
 - If there is a positive alert, is the LMHA timely notified?
 - Does the LMHA know who is responsible for, and how they receive, this notification?
- Is my LMHA/LBHA/LIDDA involved in initial detention?
 - Does a jail liaison have contact with my LMHA?
 - Does the LMHA connect defendants to psychiatric, IDD, and SUD services?
 - Does the LMHA provide contracted jail-based treatment services?
- Do defendants have access to 24/7 tele mental health and telehealth services? [Gov't Code § 511.009\(a\)\(19\)](#). Am I in communication with my Sheriff about the issues that arise in my court if the jail does not ensure individuals in custody have access to treatment?
- Are defendants being provided their prescription MH medications? [Gov't Code § 511.009\(d\)](#).
- If multiple medical and psychiatric providers serve defendants, are they connected and communicating via a single medical record to ensure continuity of care and informed treatment?

Magistration

- Do the Magistrates receive timely notice of credible information from jail administration that may establish reasonable cause to believe that an individual is a person with MI or IDD? [CCP art. 16.22\(a\)\(1\)](#).
- Are Magistrates holding [CCP art. 15.17](#) Hearings? Does the hearing occur within 48 hours of arrest?
- Do the Magistrates order the 16.22 Interview when reasonable cause is found (from the jail admin or from an alternative source)? [CCP art. 16.22](#).
- Are Magistrates aware they may order 16.22 Interviews for people accused of Class C Misdemeanors, according to a new revision to the law? [CCP art. 16.22](#).
- Does the Magistrate send copies of the Collection of Information Report (16.22 Report) to the defense counsel, prosecutor, trial court with jurisdiction, Sheriff, and personal bond office/pretrial supervision office? [CCP art. 16.22\(b-1\)](#).
- Does the magistrate send copies of the 16.22 order and report to the County/District Clerk's office for inclusion in monthly mandatory reporting to the Office of Court Administration? [Tex. Admin Code 171.2](#)
- Are my County/District Clerks educated on the 16.22 process and why their duty to report the number of reports to OCA is imperative? [Tex. Admin Code 171.2](#).
- Have I, or has my county, developed a process for effective and efficient ordering, collection, distribution, and consideration of 16.22 requests, interviews, and reports?
- Is this process written in a procedure manual for others to follow in the future?

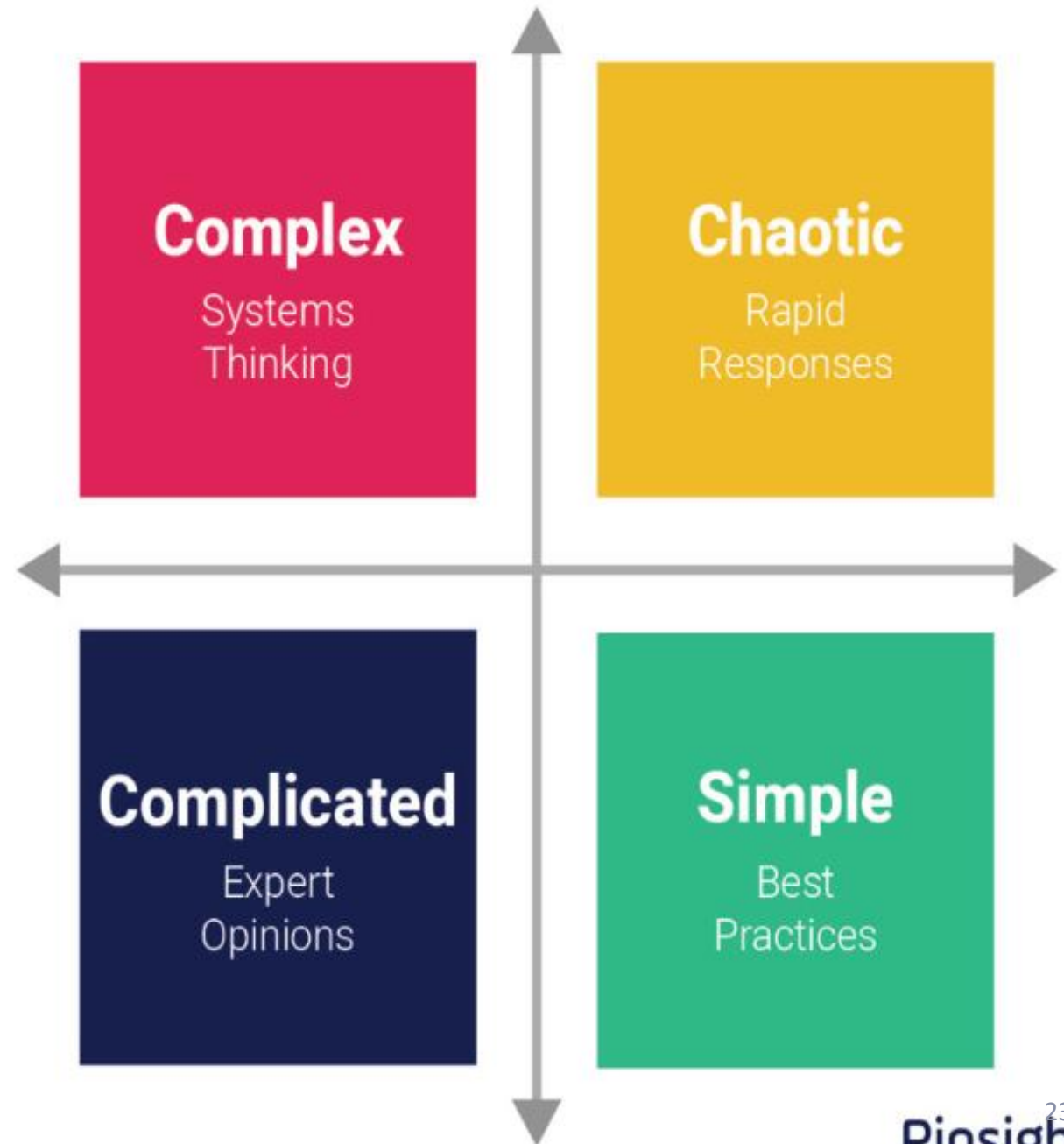
Certainty/agreement matrix

Far from



WATERLOO INSTITUTE FOR SOCIAL
INNOVATION AND RESILIENCE

What areas in
the checklist
will be
Simple?
Complicated?
Complex?



All of these Steps Help Create a Path for New Innovations and Best Practices!

Collaborate
w/SIM
Mapping

Action
Planning

County MH
Law
Planning

Thank you!

JCMH@txcourts.gov