



TEXAS
Health and Human
Services

Children's Behavioral Health Strategic Plan

Courtney Harvey
Statewide Behavioral Health Coordinating Council
Texas Health and Human Services

November 22, 2024

Rider Requirement

The Statewide Behavioral Health Coordinating Council (SBHCC) shall develop a strategic plan specific to the behavioral health of children and youth.

The plan shall incorporate the full continuum of care needed to support children and their families and include:

- 1) Descriptions of who provides what services to which children;
- 2) Strategies to identify and address gaps in care;
- 3) Discussion of workforce shortages;
- 4) Information on funding and reimbursement; and
- 5) Children-specific data and expenditure information.



Subcommittee Members

| | |
|--|--|
| Texas Workforce Commission | Texas Pediatric Society |
| Texas Medical Association | Behavioral Health Executive Council |
| My Health My Resources Tarrant County | Children’s Hospital Association of Texas |
| National Alliance on Mental Health Texas | Texas Association of Community Health Centers |
| The Center for Young Minds | Texas Family Voice Network |
| Collaborative Taskforce on School Mental Health Services | The University of Texas at Austin – Texas Institute for Excellence in Mental Health |
| Texas Alliance for Child and Family Services | Texas Council of Community Centers |
| National Training and Technical Assistance Center for Child, Youth, and Family Mental Health | Behavioral Health Advisory Committee – Children and Youth Behavioral Health Subcommittee |
| Betty Hardwick Center | Children’s Commission |
| Texas Hospital Association | Texas Association of Health Plans |
| Texas Judicial Commission on Mental Health | Texas Child Mental Health Care Consortium |
| Texas Tech University Health Sciences Center | Texas Department of Criminal Justice - TCOOMMI |



TEXAS
Health and Human
Services

Scope and Parameters

Framework

- System of Care (SOC) philosophy and model

Timeframe

- Five-year plan covering fiscal years 2025-2029 that will be refreshed in even-numbered years

Age Range

- Children from birth through age 17

Service Providers

- Service providers from all sectors – government, nonprofit, and for-profit

Behavioral Health Continuum of Care

- Prevention through inpatient services



TEXAS
Health and Human
Services

Information Gathering and Activities

Data and Other Information Sources

- Literature reviews
- Public data sources
- Presentation series
- Youth focus groups

Concurrent Initiatives and Confering

- Children's Behavioral Health Policy Lab
- Study on Mental Health Services for Children and Adolescents
- Department of Family and Protective Services – Behavioral Health Strategy
- Conference:
 - Hogg Foundation for Mental Health
 - Meadows Mental Health Policy Institute



TEXAS
Health and Human
Services

Gaps in Services and Infrastructure

Behavioral Health Parity

Rates for Reimbursement for Behavioral Health Services

Behavioral Health Workforce

Behavioral Health Data and Health Care Information Technology

Crisis, Outpatient, Residential, and Inpatient Care



TEXAS
Health and Human
Services

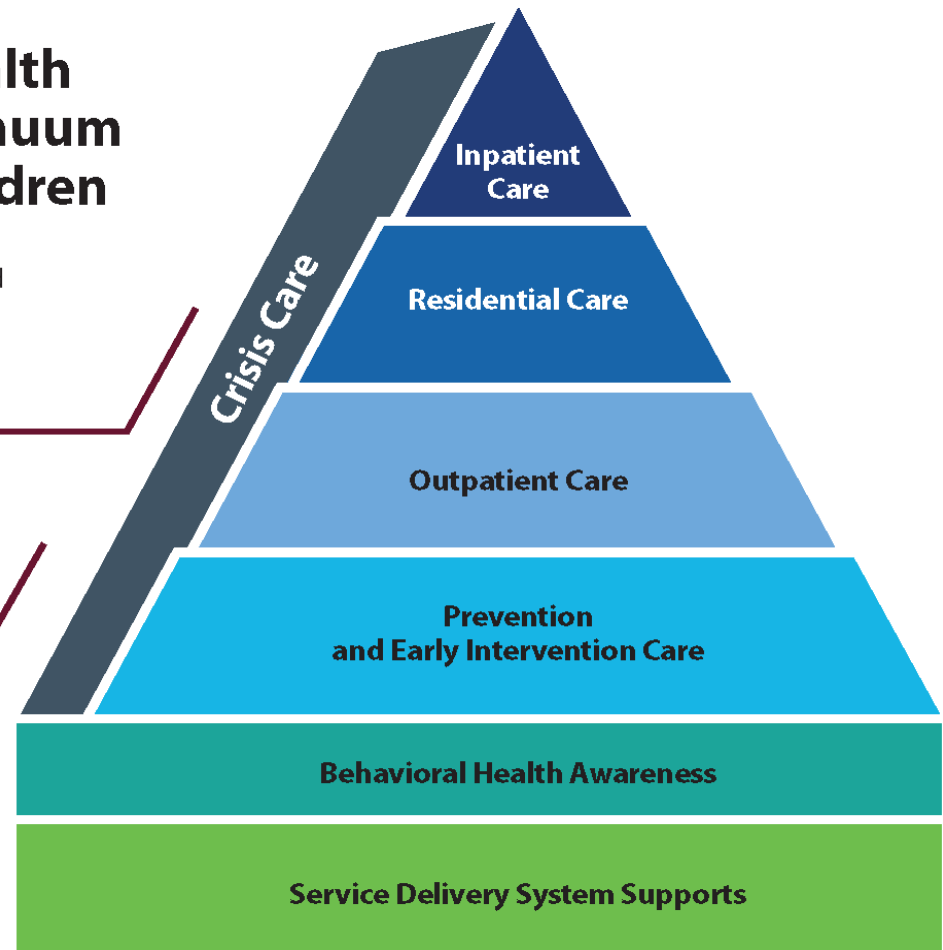
Children's Behavioral Health Care Continuum

Behavioral Health Services Continuum of Care for Children

The continuum of care is a tiered model of behavioral health services and supports for children and their caregivers.

Services range in intensity from prevention and early intervention care through inpatient care, with crisis care available at any time of need.

Levels of care are supported by a foundation of awareness and service delivery system supports.



TEXAS
Health and Human
Services



TEXAS
Health and Human
Services

Thank you

For more information about the strategic plan, contact Diana Busler, Diana.Busler@hhs.texas.gov or mentalhealth_sbhcc@hhs.texas.gov