

YEAR TWO OF ELIMINATE THE WAIT

Collaborative Solutions for the
Competency Restoration Crisis

The 5th Annual Judicial Summit on Mental Health
November 2-4, 2022



Welcome

- ▶ Moderator
 - *Kristi Taylor, J.D.*, Executive Director, Texas Judicial Commission on Mental Health

- ▶ Panelists in Alphabetical Order
 - *Catie Bialick, M.P.Aff.*, Senior Advisor, Office of the State Forensic Director, HHSC
 - *Colleen Davis, J.D.* Assistant County Attorney, Burnet County
 - *Adrienne Kennedy, M.A.*, Past President, National Alliance on Mental Illness

JCMH Summit Panel: Key Themes

CHALLENGES

People with MH and/or IDD are arrested when diversion is appropriate and possible.

The belief that competency restoration is treatment is a big challenge. Competency restoration focuses on stabilization and rote memorization of legal procedures and settings.

Often, inefficiencies and delays occur in both the evaluation and restoration of individuals.

SOLUTIONS

Develop a state action plan and legislative proposals.

Develop tailored resources and provide targeted TA to communities across Texas.

Enhance accountability and create standard processes across the continuum of stakeholders.

Eliminate the Wait Toolkit

ELIMINATE the WAIT

The Texas Toolkit
for Rightsizing
Competency Restoration Services

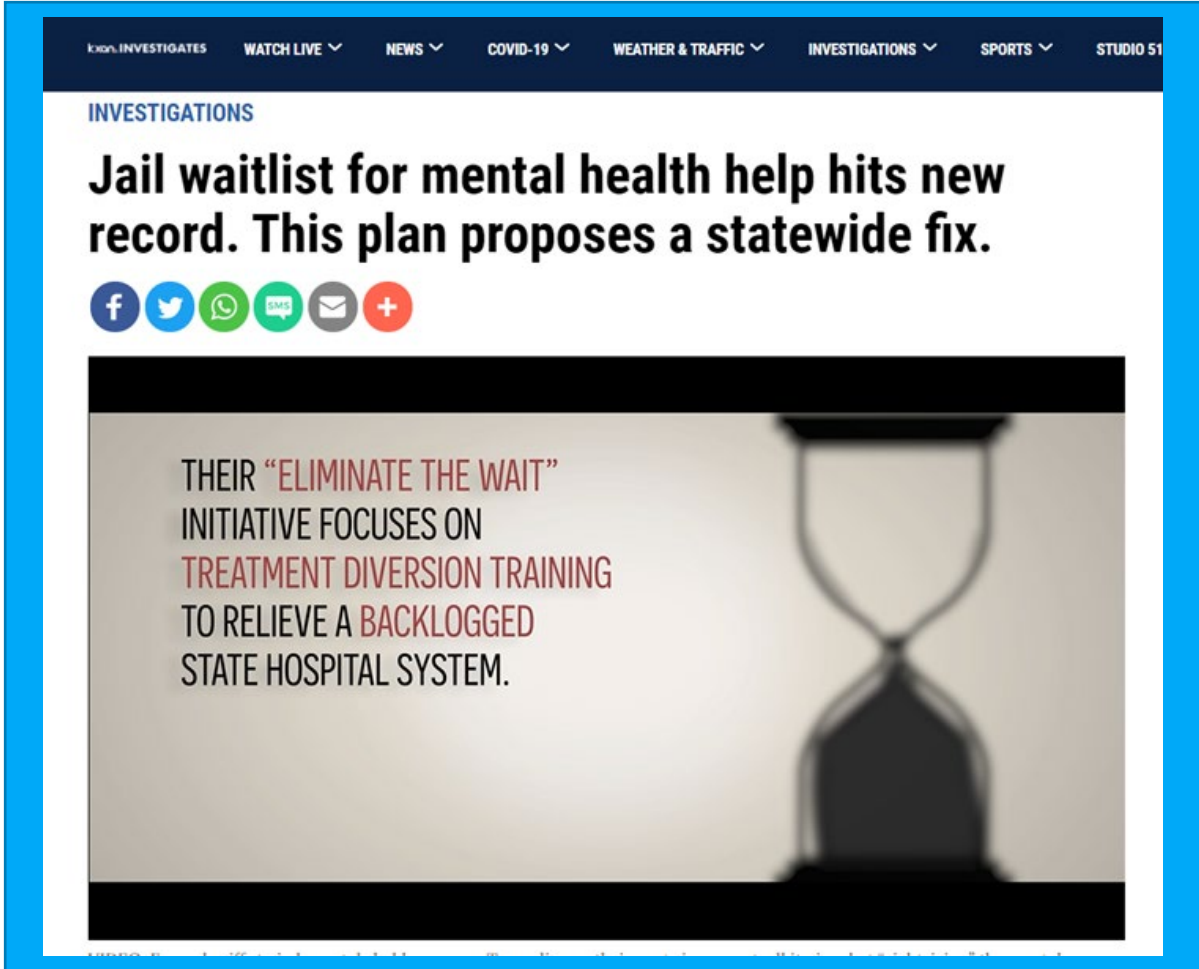
October 2021



Eliminate the Wait

A statewide campaign to *Eliminate the Wait (ETW)* for Inpatient Competency Restoration Services.

Partners:



Launching a State Initiative: Potential Next Steps



Divert to What? Using the Eliminate the Wait Toolkit to Create Diversion Options

Brick-and-Mortar
Buildings are NOT
always needed for
Diversion.

Your County has
Options

Shut the Front Door

Solutions will require both state/and local work, not just either/or.

For example:

- ▶ there are state efforts to add more beds throughout Texas

AND

- ▶ the many professionals involved must reevaluate practices at the local level.

Different Strategies for Different People

Start with the person with mental illness or IDD.
What is the least-restrictive, appropriate setting?



1. Some people do not need a locked facility.



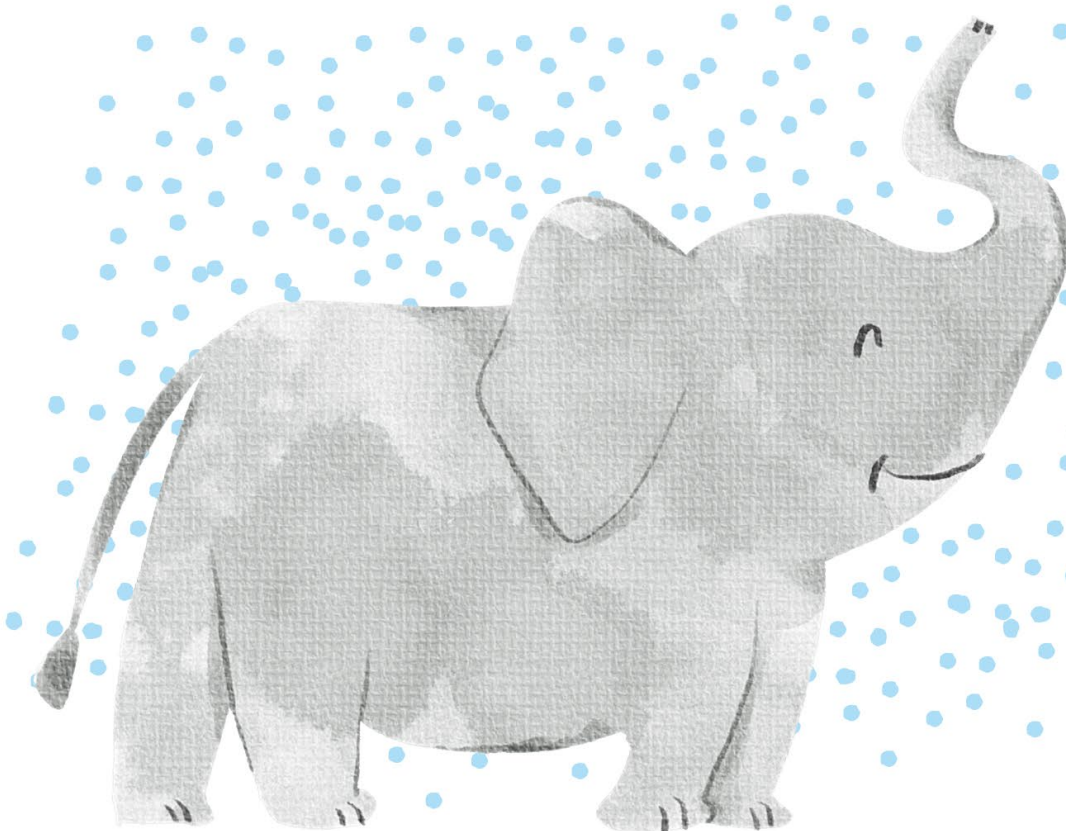
2. Others may initially need a locked facility but might be able to stabilize in custody.



3. Some people will need a locked facility throughout their case.

There's an elephant in the room.

Creating new resources for diversion is daunting,
but you can take *one bite at a time*.



*"There is only
one way to eat
an elephant: one
bite at a time."*

Desmond Tutu

Take a Bite

- ▶ **B**ring together the behavioral health providers, judiciary, law enforcement, sheriffs, jail staff, prosecutors, and defense attorneys.
- ▶ **I**mprove your processes by using the Eliminate the Wait Toolkit to increase efficiencies.
- ▶ **T**rack your county's progress and savings and take this to your County Commissioners.
- ▶ **E**xpand the diversion options in your county such as investing in a drop-off center.

Do the Math on Post-Booking Diversion



For example...

$$5 \times 180 \times \$225 = \$202,500$$

people restored using strategies 1&2 days spent in jail per individual to house 1 person for one day saved

***Imagine what the total savings could be if you added pre-booking diversion!**

ETW Gaps and Solutions

Rural Strategies

ETW Gaps and Solutions

Family Engagement

ETW Gaps and Solutions

Training & Technical Assistance

Eliminate the Wait Regional Forums

**ELIMINATE
THE WAIT**

**CENTRAL
TEXAS
REGIONAL
FORUM**

When	Where
Dec. 1, 2022 8 a.m. – 3 p.m.	Austin

2200570 - IHSC MSS - Sept. 2022

JCMH
TEXAS JUDICIAL COMMISSION
ON MENTAL HEALTH

Hogg Foundation
for Mental Health

Texas Council
of Community Centers

Texas Criminal Defense
Lawyers Association

TEXAS
Health and Human
Services

Partnering with Local Mental Health Authorities, Local Behavioral Health Authorities, law enforcement, jail administrators, and judicial stakeholders, regional forums aim to:

1. Share national and state best practices;
2. Conduct stakeholder specific trainings on ETW strategies; and,
3. Partner with county leadership teams to develop local action plans

JCMH Resources and Specialized Training



Bench Books

MH Law
Training and TA

MH Court
Support

Peer
Networking

Legislative
Initiatives

Video Library



TEXAS
Health and Human
Services

HHSC Training and Technical Assistance

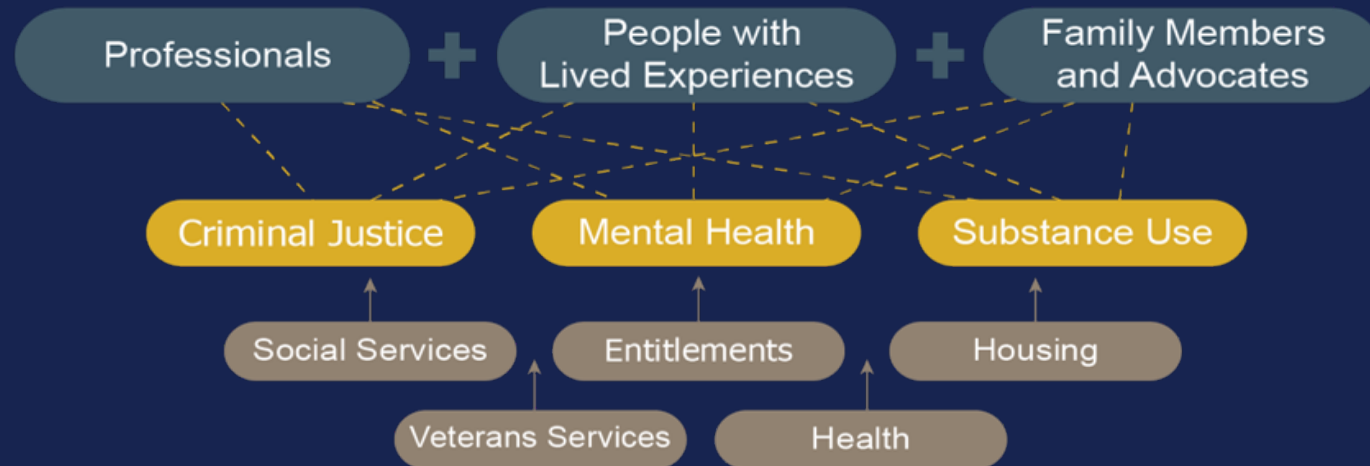
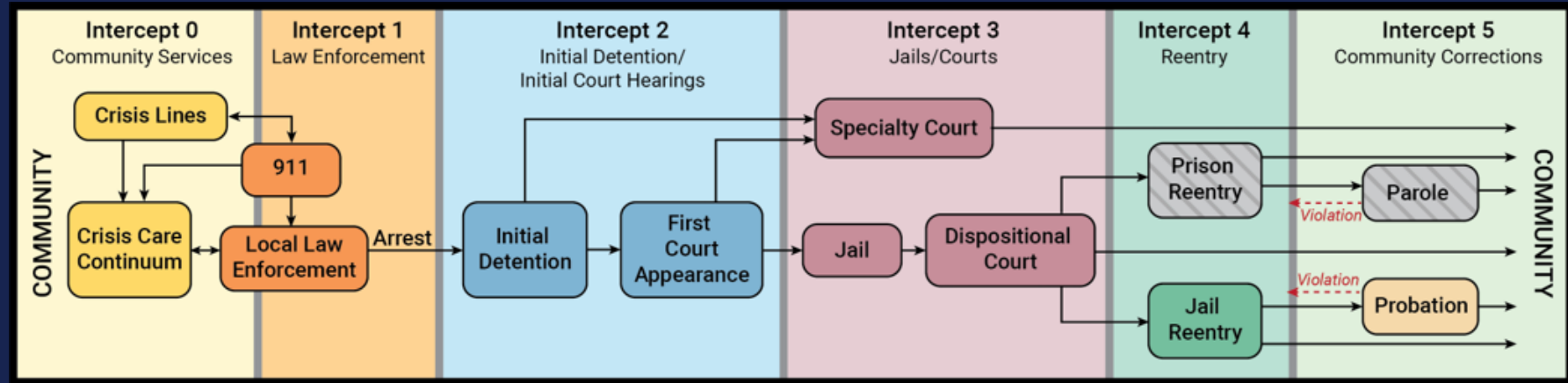
The Office of the State Forensic Director provides specialized support for behavioral health and justice system stakeholders to reduce and prevent justice involvement for people with mental illness, substance use disorders, and/or intellectual and developmental disabilities.



Sequential Intercept Model Mapping Workshops



TEXAS
Health and Human
Services





Thank You!