



2022 Judicial Summit on Mental Health

Presented by Dr. Sandra D. Smith
Via Hope Peer Programs Manager
November 3, 2022

Who is Via Hope

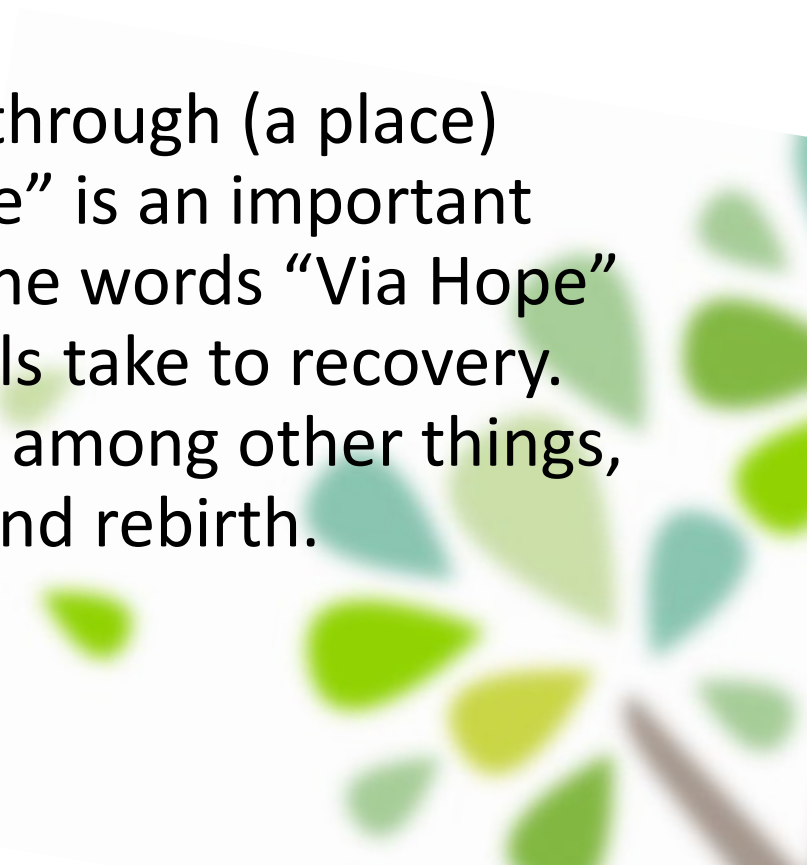
*Via Hope traces its' roots to the 2003 final report of the President's New Freedom Commission **Achieving the Promise**, which called for fundamentally transforming the nation's mental health system to a consumer, family, and youth-driven Recovery Model, a system in which recovery is the expected outcome for everyone with a mental health challenge.*

Mental Health Resource of Texas dba **Via Hope** is a Texas based 501c3 nonprofit organization that provides national trainings and organizational change work.

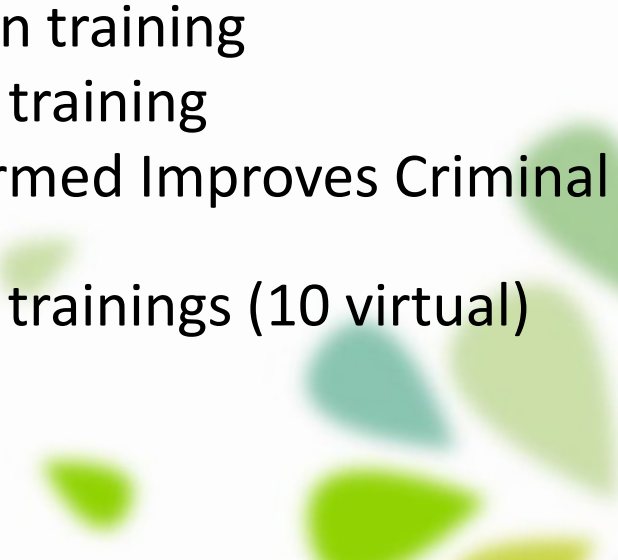
Mission: Via Hope is changing the way we all think about Behavioral Health.

What does Via Hope mean:

The word Via means “traveling through (a place) enroute to a destination”. “Hope” is an important concept in recovery. Together, the words “Via Hope” symbolize the journey individuals take to recovery. The tree in the logo symbolizes, among other things, the continual cycle of renewal and rebirth.



Via Hope Offers:

- Mental Health Peer Specialist certification training
 - Peer Support Supervisor certification training
 - Reentry Peer Specialist certification training
 - SAMHSA's "How Being Trauma-Informed Improves Criminal Justice Systems"
 - 26 Continuing Education Unit (CEU) trainings (10 virtual)
 - Person Centered Recovery Planning
 - Demystifying the Peer Workforce
 - Peer Implementation TA
- 

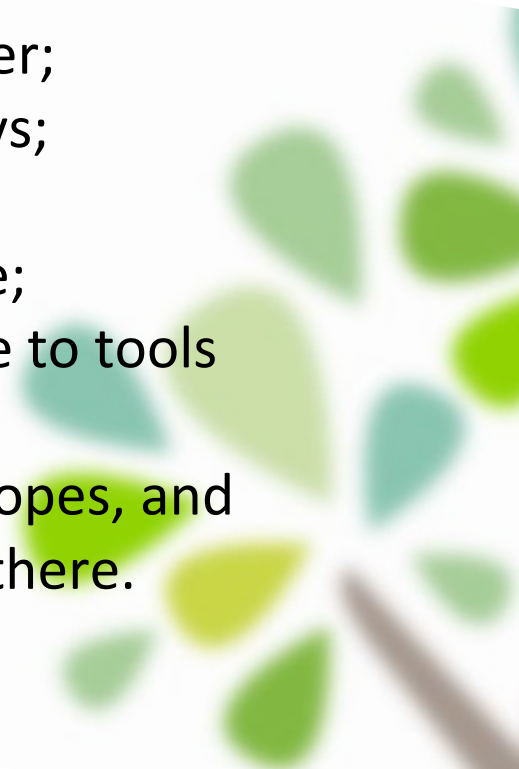
Peer Support Specialist: an evidenced-based practice



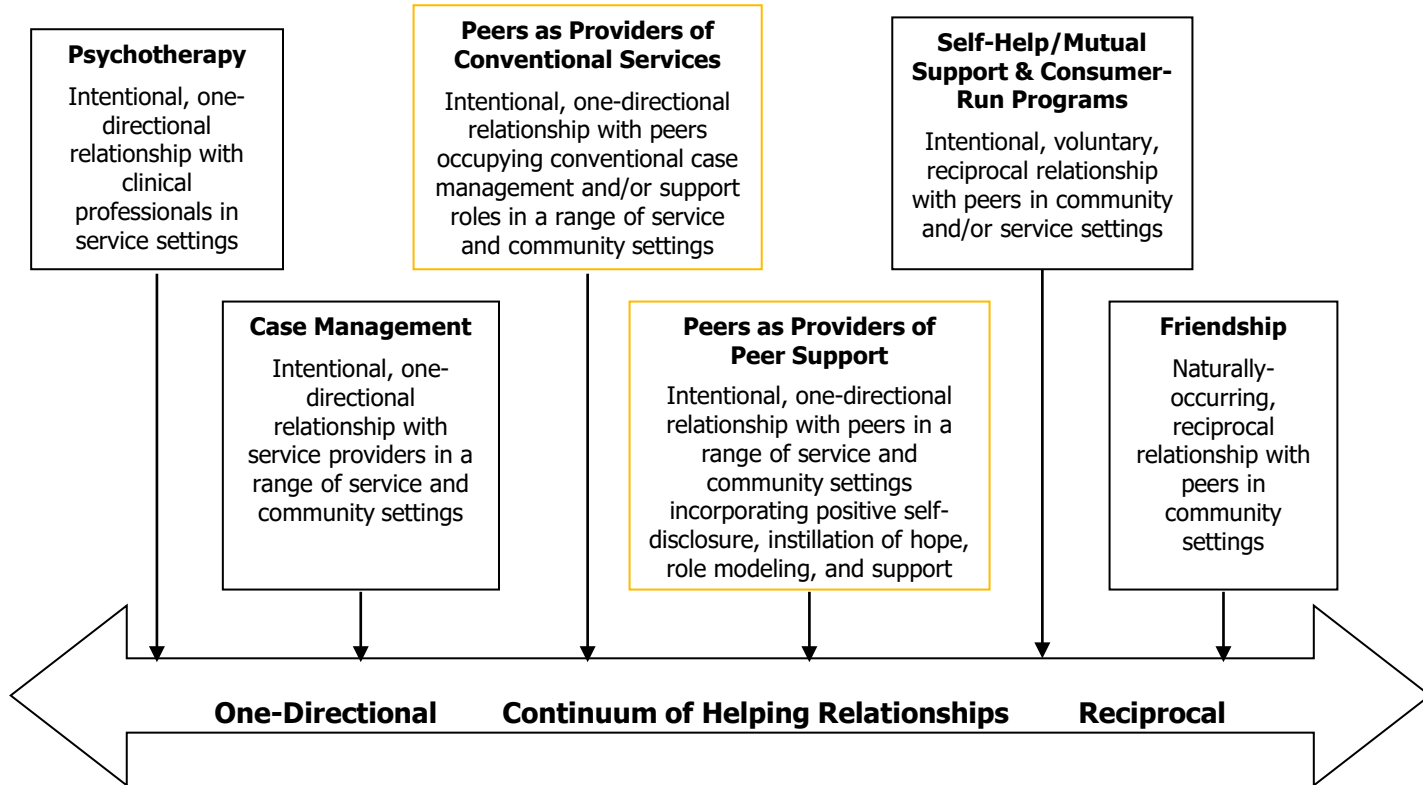
Evidence-based principle:

Peer support workers bring their own personal knowledge of what it is like to live and thrive with mental health conditions and substance use disorders. They support people's progress towards recovery and self-determined lives by sharing vital experiential information and real examples of the power of recovery. The sense of mutuality created through thoughtful sharing of experience is influential in modeling recovery and offering hope.

What do Peer Specialists do:

- ✓ inspire hope that people can and do recover;
 - ✓ walk with people on their recovery journeys;
 - ✓ dispel myths about what it means to have a mental health or substance use challenge;
 - ✓ provide self-help education and link people to tools and resources; and
 - ✓ support people in identifying their goals, hopes, and dreams by creating a roadmap for getting there.
- 

A Continuum of Helping Relationships

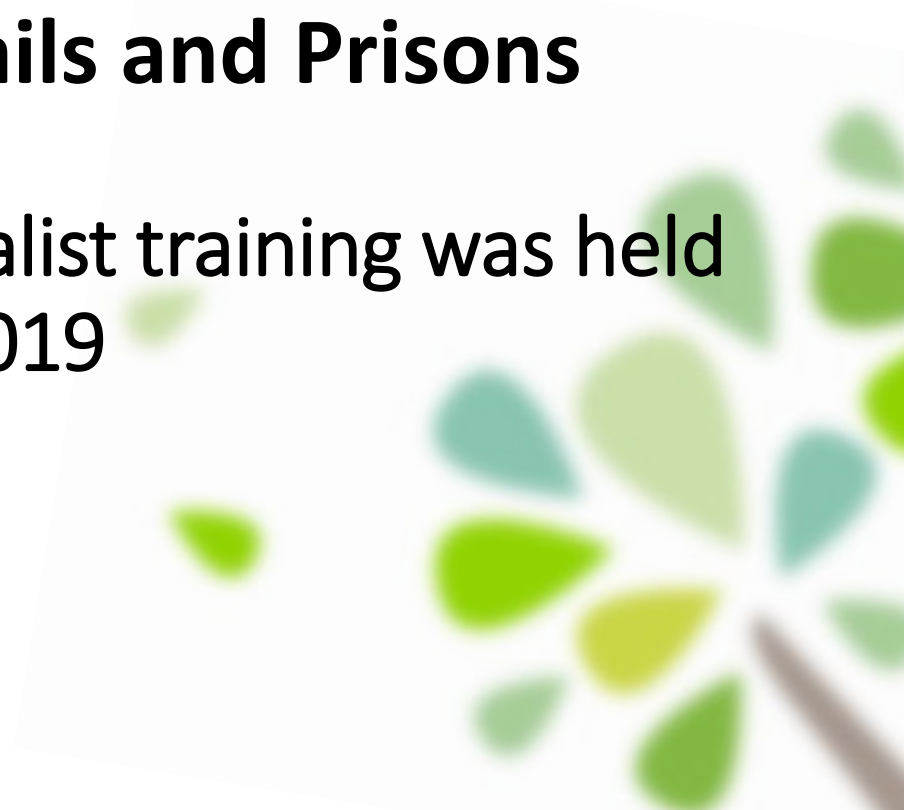


Texas Certification Board: 6 Peer Certifications

1. Mental Health Peer Specialist – Medicaid Billable
 2. Peer Support Supervisor – Medicaid Billable
 3. Recovery Support Peer Specialist – Medicaid Billable
 4. Peer Recovery Support Specialist – IC&RC
(International Certification and Reciprocity Consortium)
 5. Family Partners
 6. **Reentry Peer Specialist**
(20 CEUs over a 2-year period)
- 

Supports and Solutions for Individuals Returning from Jails and Prisons

First Reentry Peer Specialist training was held
July 2019





*Via Hope Certified Reentry Peer Specialist
Inaugural Training - July 2019*

RE-ENTRY PEER SPECIALIST

“Re-entry” - transition from incarceration to community

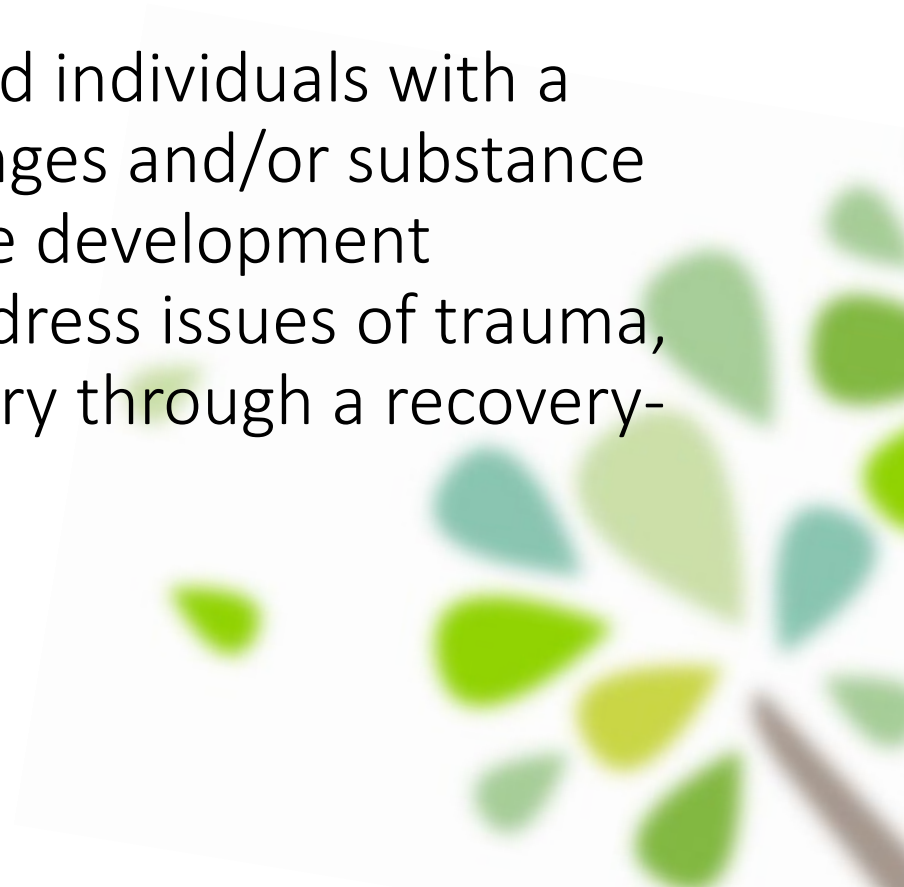
“Peer” - individuals that share similar lived experiences

“Specialist” - individual highly skilled in a specific field

Re-entry Peer Specialists - people with shared lived experience around incarceration and mental health and/or substance use challenges who work in a variety of settings to provide support to other people with criminal justice involvement who are seeking to find or maintain their own personal healing and recovery.

PURPOSE

To provide formerly incarcerated individuals with a history of mental health challenges and/or substance use challenges with a workforce development credential and life skills that address issues of trauma, recidivism and barriers to reentry through a recovery-oriented peer-led strategy.



How is the Via Hope RPS training Unique:

- This training is designed specifically, for formerly incarcerated individuals.
- The curriculum addresses three specific Traumas “Thrauma®”:
 - Before incarceration
 - During incarceration
 - After incarceration
- The curriculum provides an introduction to healing from the aforementioned traumas
- Addresses the concept of Freedom vs. Release



Key Learning Objectives

Involve participant's self-exploration relative to:

(1) Recovery from a Reentry Perspective,

(2) Trauma (3 specific):

Before, during, and after incarceration

(3) Recidivism Intervention,

(4) What it means to be a Peer Specialist, and

(5) Maintaining a Whole Person Perspective



Statistic:

Texas inmates with mental illness are more likely to recidivate (i.e. experience repeat interactions with the criminal justice system, such as re-arrest or re-incarceration) than inmates without. One study conducted in Texas state prisons between 2006 and 2007 found that the odds of previous incarceration for an inmate with mental illness are 1.7 times greater than for an inmate without, and that more than half of prison inmates with a major psychiatric disorder have been incarcerated more than once.

Megan Randall and Katharine Ligon, "From Recidivism to Recovery: The Case for Peer Support in Texas Correctional Facilities" (Aug. 6, 2014), Center for Public Policy Priorities (p. 4), *citing* Jacques Baillargeon et al., "Psychiatric Disorders and Repeat Incarcerations: The Revolving Prison Door," *American Journal of Psychiatry* 166.1 (January 2009), p.106, accessed 12 March 2014 at <http://ajp.psychiatryonline.org/article.aspx?articleid=100490>.

Peer Support Roles Across the Sequential Intercept Model

	INTERCEPT 0	INTERCEPT 1	INTERCEPT 2	INTERCEPT 3	INTERCEPT 4	INTERCEPT 5
	Hospital, Crisis, Respite, Detox/Sobering, & Peer Services	Law Enforcement & Emergency Services	Initial Detention & Initial Court Hearings	Jails & Courts	Reentry	Community Corrections & Community Supports
COMMUNITY	Crisis/Warm Lines <ul style="list-style-type: none"> Counseling and providing resources 	9-1-1 Dispatch <ul style="list-style-type: none"> Engaging those identified as calling 911 and utilizing emergency services as their primary source of healthcare 	Initial Detention <ul style="list-style-type: none"> Explaining the arrest, detention, and arraignment processes 	Courts <ul style="list-style-type: none"> Mentoring within mental health, veterans, drug/recovery, and other problem-solving courts Appearing in court with clients and at case staffing and review hearings Facilitating recovery education/training with court staff Integrating into Forensic Assertive Community Treatment (FACT) teams 		
	Law Enforcement <ul style="list-style-type: none"> Involvement in Crisis Intervention Teams (CIT) and CIT training for first responders Participating in behavioral health co-responder teams, often for follow-up and proactive engagement Supporting pre-arrest diversion into peer-run services 				Jail/Prison Reentry <ul style="list-style-type: none"> Mentoring/assisting with reentry/treatment planning Providing a "familiar face" on the day of release from prior in-reach Supporting system navigation (accessing housing, employments, SSI/SSDI benefits, etc.) Providing outreach at reentry to transition individuals at risk of opioid overdose to treatment/support 	
	Crisis Care Continuum <ul style="list-style-type: none"> Engaging in the treatment and recovery process Integrating into Assertive Community Treatment (ACT) teams 					
	Mobile Crisis Teams <ul style="list-style-type: none"> Acting as staff or volunteers, paired with other professionals 					
	Crisis Stabilization Centers/Hospitals <ul style="list-style-type: none"> Working in Navigator or Bridger positions Advocating through the emergency room process Reaching out at discharge to those at risk of/survivors of opioid overdose Transitioning state hospital forensic patients to the community within the competence to stand trial process 					
			Pretrial Services/Initial Court Appearance <ul style="list-style-type: none"> Navigating the bail and pretrial release process Advocating for individuals with behavioral health conditions Connecting those released at initial appearance to behavioral health services while they await the next court date 	Jail/Prison <ul style="list-style-type: none"> Mentoring/facilitating support groups through in-reach Facilitating Certified Peer Support Specialist and WRAP trainings Providing practical assistance with incarceration and reintegration (e.g., transportation on visiting days, supplies on release) Supporting those in jail-based competency restoration units 		
						Probation/Parole <ul style="list-style-type: none"> Helping connect to probation/parole officers Assisting with conditions of probation/parole and balancing treatment Accessing resources and services Providing prosocial interaction opportunities Providing technical training to those who experience a "new world" due to technological advances

COMMUNITY

SPECIFIC EXAMPLES

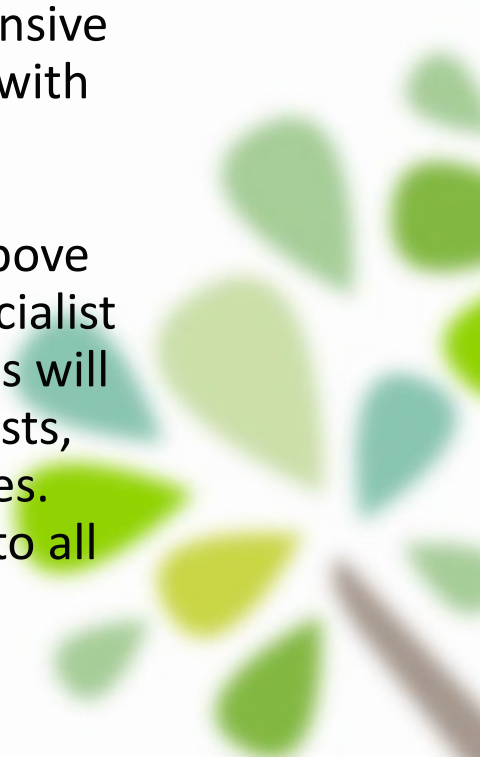
INTERCEPT 0	<ul style="list-style-type: none"> • Mental Health and Addiction Association of Oregon's Tri-County 911 social work team (utilizing 911/ER for primary healthcare) and Clackamas Hope Team (Opioid Overdose Survivor Program) • Oakland County, MI's Common Ground Resource and Crisis Center includes peers on the CIRT mobile crisis team • Albany, NY's Northern Rivers Mobile Crisis Services teams include peer support specialists • The Living Room in Louisville, KY provides peer support as an alternative to jail, the ER, or inpatient hospitalization • MHA Nebraska's R.E.A.L. (Respond, Empower, Advocate, and Listen) program receives referrals from law enforcement, and also for those recently released from prison. Their Keya House and Honu Home are also staffed with peer specialists (also Intercepts 1, 4, & 5)
INTERCEPT 1	<ul style="list-style-type: none"> • In Perry County, MO, CIT trainings integrate peers in lived experience in panels and role playing
INTERCEPT 2	<ul style="list-style-type: none"> • The Defender Association of Philadelphia, PA employs peers as bail navigators • Maricopa County, AZ uses forensic peers to connect those released at initial appearance to behavioral health services while they await court dates
INTERCEPT 3	<ul style="list-style-type: none"> • Hamilton County, OH's Transitioning Opportunities for Work, Education, and Reality (TOWER) program utilizes peers for five weeks of career-readiness prior to release • NADCP's Justice For Vets National Mentor Corps provides professional development for volunteer veterans working in Veteran Treatment Courts • Massachusetts uses the MISSION-CJ (Maintaining Independence and Sobriety through Systems Integration, Outreach, and Networking—Criminal Justice) model in their adult drug, mental health, veteran, and family drug courts and reentry programs • The Pennsylvania Department of Correction's Certified Peer Support Specialist and WRAP programs are offered in prison
INTERCEPT 4	<ul style="list-style-type: none"> • Philadelphia, PA's Peerstar LLC program provides jail in-reach for reentry planning • The Mental Health and Addiction Association of Oregon's EVOLVE MULTNOMAH CO. HB 4143 program transitions those at risk of opioid overdose at reentry to substance use treatment • The Via Hope: Texas Mental Health Resource in Austin provides a Reentry Peer Specialist training and certification
INTERCEPT 5	<ul style="list-style-type: none"> • Denver, CO's PHASE (Probation and Parole Accountability and Stabilization Enhancement) program provides peer support to probationers • NYC's Project Renewal Parole Support and Treatment Program (PSTP) includes peer support • The Offender Alumni Association in multiple Alabama cities provides community-based supports to people following incarceration

Texas Department of Criminal Justice Announcement

April 2022

"The Via Hope Organization aims at changing the way we all think about behavioral health by conducting trauma-responsive training and promoting the power and wisdom of people with lived experiences.

As part of a newly developed Reentry program entitled Above and Beyond, Via Hope will be conducting Reentry Peer Specialist Training with a select group of female inmates. These ladies will then serve pre- and post-release as Reentry Peer Specialists, providing support and assistance to newly released ladies. We look forward to offering new and innovative trainings to all our inmate population in the future."





Recently Nationally Approved:



NATIONAL CERTIFIED PEER SPECIALIST (NCPS)
APPROVED TRAINING

This is to certify that the
**Mental Health Resource of Texas Reentry
Peer Specialist Certification Training**

meets the training requirements set forth by the NCPS certification.



A handwritten signature in black ink, appearing to read "Patrick Hendry".

PATRICK HENDRY, NCPS

VP OF PEER ADVOCACY,
SUPPORTS, & SERVICES

Coming Home: Supports and Solutions for Individuals
Returning from Jails and Prisons

Question & Answers

sandra.smith@viahope.org

