



TEXAS
Health and Human
Services

Health and Specialty Care System

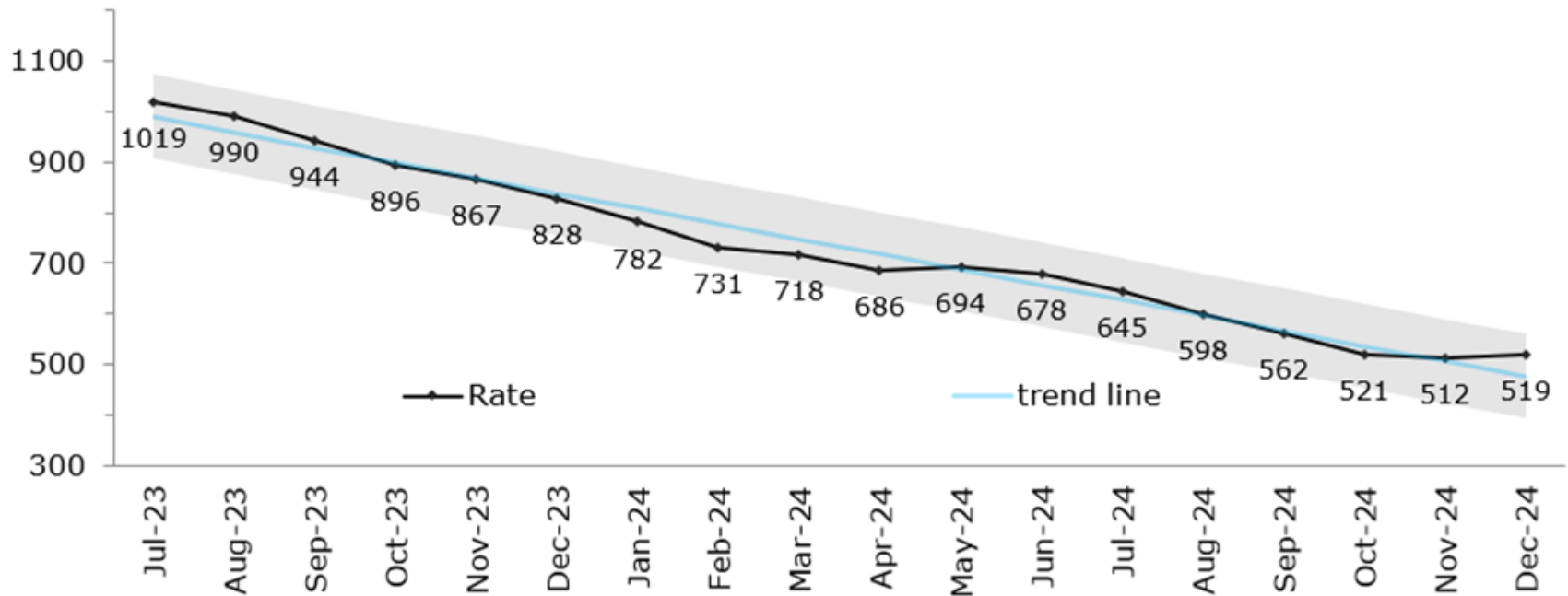
Texas Judicial Commission on Mental Health
January 31, 2025

MSU Waitlist



TEXAS
Health and Human
Services

MSU - Number on Waitlist - Total

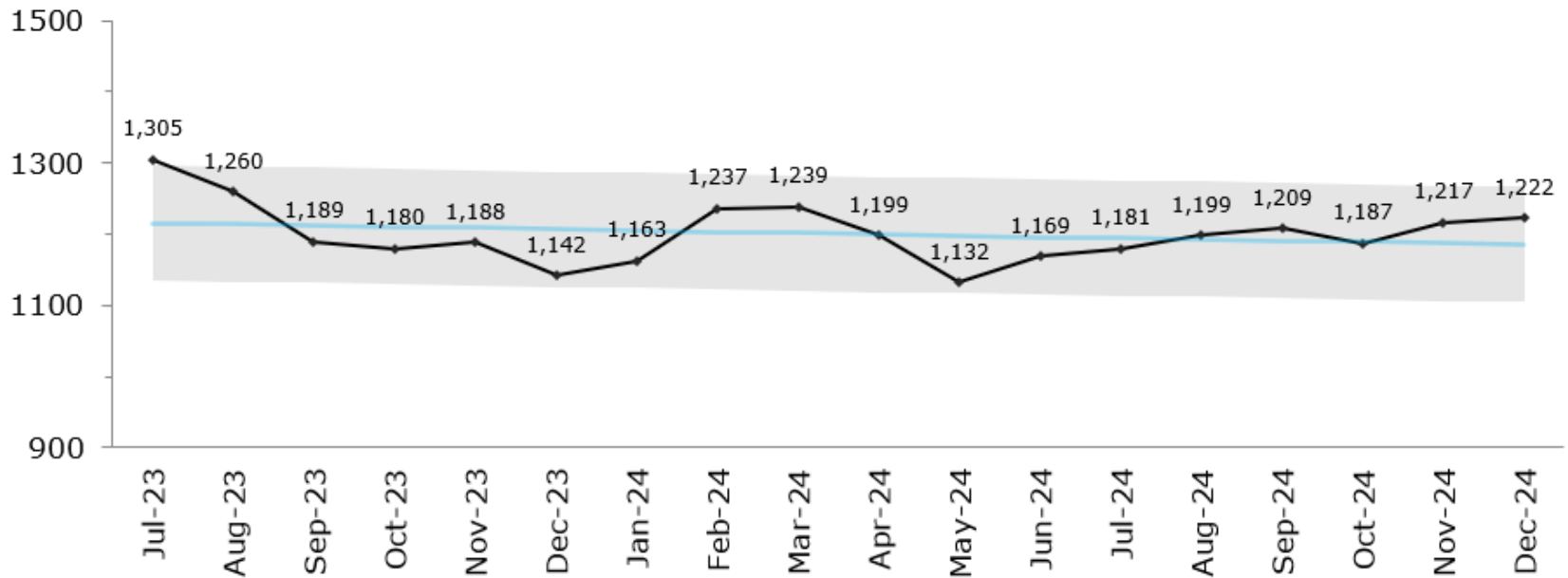


Non-MSU Waitlist



TEXAS
Health and Human
Services

Non-MSU - Number on Waitlist - Total



State Hospital Capacity



TEXAS
Health and Human
Services

Total Capacity		Beds Online												
		Jan-24	Feb	Mar	Apr	May	Jun	Jul	Aug	Sept	Oct	Nov	Dec	Jan-25
ASH	240	191	191	191	191	191	191	191	191	191	191	192	192	192
BSSH	144	144	144	144	144	144	144	144	144	144	144	144	144	144
EPPC	71	67	69	69	71	71	71	71	71	71	71	71	71	71
KSH	290	225	230	235	235	235	235	235	235	240	240	245	250	250
NTSH WF	268	244	244	244	255	255	268	268	268	268	268	268	268	268
NTSH S	32	25	25	25	25	25	25	25	25	25	25	25	25	25
NTSH V	262	190	190	190	190	190	190	190	202	207	212	212	217	217
RGSC	55	55	55	55	55	55	55	55	55	55	55	55	55	55
RSH	288	251	258	263	263	265	265	265	265	259	265	265	265	265
SASH	300	268	250	268	268	268	268	256	264	268	268	268	268	268
TSH	305	205	205	205	210	210	210	210	210	210	212	212	212	212
WCY	74	72	72	72	74	74	74	74	74	74	74	74	74	74
Total	2,329	1,937	1,933	1,961	1,981	1,983	1,996	1,984	2,004	2,012	2,025	2,031	2,041	2,041*

*Beds Offline: 288

- Staffing: 236 beds
- Construction/Maintenance: 52 beds

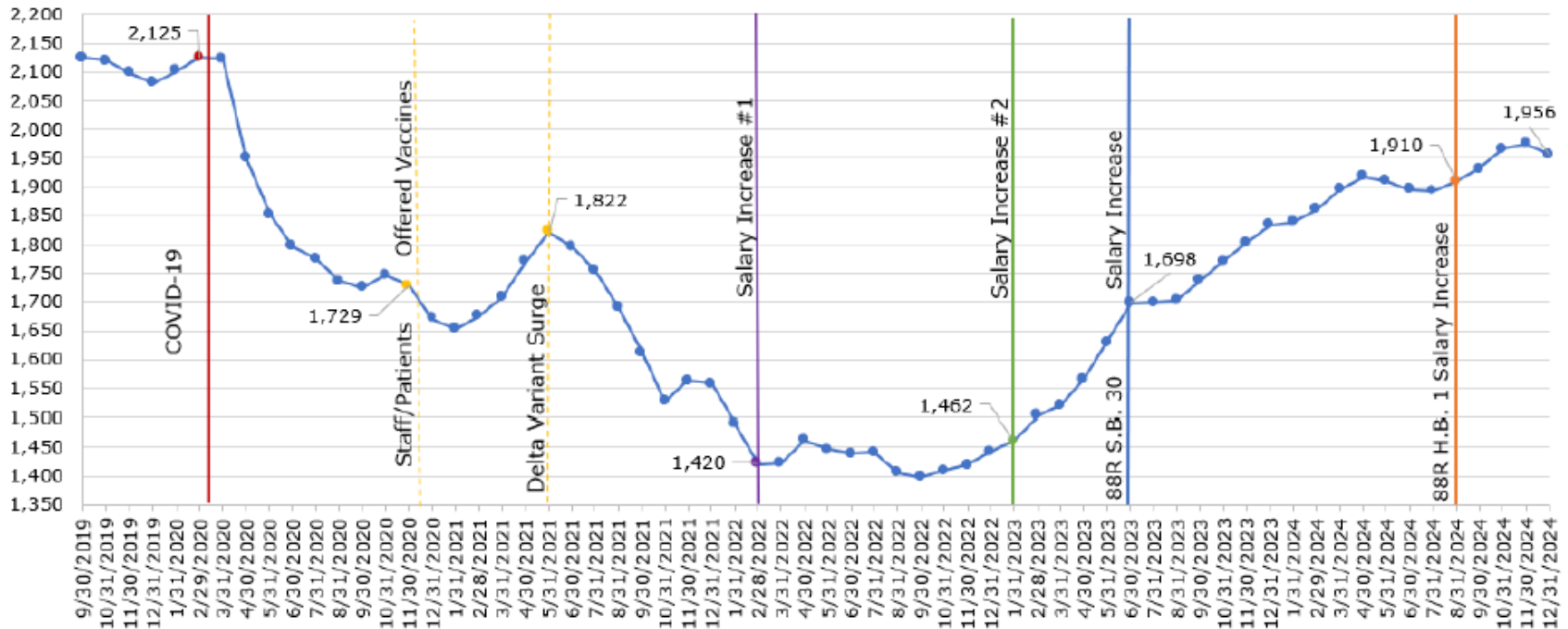
State Hospital Capacity



TEXAS
Health and Human
Services



State Hospital Average Daily Census FYs 2020-2025



State Hospital Construction Projects



TEXAS
Health and Human
Services

Project	Project Details	Anticipated Completion	Budget
Texas Behavioral Health Center at UTSW Medical Center	292 beds (200 adult, 92 pediatric)	Adult Unit: July 2025	\$384.44 million
	At least 75 forensic	Garage: December 2025	
			Pediatric Unit: April 2026
Terrell SH Replacement	250 beds (50 MSU, 135 forensic, 35 adolescent, 25 civil)	Late 2027 (substantial completion)	\$573 million
North Texas SH-WF Replacement	200 beds (24 MSU, 136 forensic, 24 adolescent, 16 civil)	Late 2027 (substantial completion)	\$452 million
Panhandle SH	75 beds (50 forensic)	Construction begins 2025, 2027 estimated completion	\$159 million
Lubbock Psychiatric Center	50 bed MSU facility	Construction begins 2025, 2027 estimated completion	\$121 million
Rio Grande SC Expansion	50 bed MSU addition	Construction begins 2025, 2027 estimated completion	\$120 million
El Paso PC Expansion	50 bed addition (25 forensic)	TBD, dependent on legislative funding	\$50 million
San Antonio SH MSU Conversion	40 bed MSU conversion	Construction begins 2025, 2026 estimated completion	\$15 million
		On Track	On Budget
		Delayed	Budget Warning
		Very Delayed	Over Budget

Senate Bill 30 Grant Projects



TEXAS
Health and Human
Services

Project	Grant Awardee & Status	Capacity	Estimated Construction Completion
Mental Health Inpatient Facility Grant Program - Rio Grande Valley	Doctors Hospital at Renaissance LTD Grant agreement executed	Up to 100 beds (at least 50% forensic)	TBD – Pending design documents
Mental Health Inpatient Facility Grant Program - Montgomery County	Montgomery County Grant agreement executed	Up to 100 beds (at least 50% forensic; however, Montgomery County has indicated they plan to serve 100% forensic)	TBD – Pending design documents
Mental Health Inpatient Facility Grant Program - Victoria County	Victoria County Grant agreement pending	Up to 60 beds (at least 50% forensic)	TBD – grant agreement still pending
Beaumont Baptist Hospital	Baptist Hospitals of Southeast Texas DBA Baptist Beaumont Hospital Grant agreement executed	72 beds (36 civil and 36 forensic)	TBD – Pending design documents

Legislative Topics We Expect

- New SH Operations- FTE needs (reflected in SB1/HB1)
- Contracted beds- costs
- EP construction



TEXAS
Health and Human
Services



TEXAS
Health and Human
Services

Thank you

**Have any questions?
Feel free to reach out:
HealthandSpecialtyCare@hhsc.state.tx.us**